

# Granville

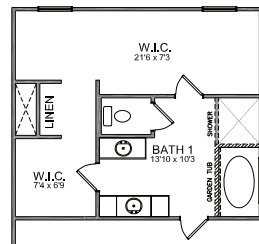
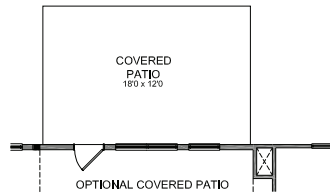


Elevation A



Elevation B

# Granville



Floor plan of Bath 1, measuring 10'7" x 7'0". The plan includes a freestanding tub, a shower, and two closets (W.I.C.). A linen closet is also shown.

**BEDROOM 4**  
132 x 1110

**BATH 3**  
9'4 x 5'4

**LOFT**  
132 x 150

**BEDROOM 3**  
132 x 120

**BATH 2**  
5'8 x 11'1

**W.I.C.**  
5'6 x 6'6

**BEDROOM 2**  
122 x 134

**UTILITY**  
6'6 x 5'1  
CLOING CLOING

**BEDROOM 1**  
149 x 134

**SITTING AREA**  
14'6 x 10'6

**BATH 1**  
13'10 x 10'3

**W.I.C.**  
7'4 x 6'9

**W.I.C.**  
21'6 x 7'3

**LINEN**

**WH**

**CLO**

**VANITY**

**SHOWER**

**OPEN TO BELOW**

**HANDRAIL w/SPINDLES**

**VAULTED CEILING**

**ELEVATION A**

### SECOND FLOOR PLAN

9' CEILINGS STANDARD w/10' VAULT IN BEDROOM 1

