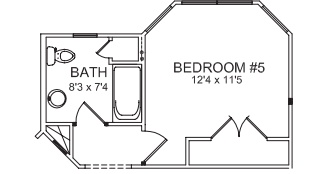


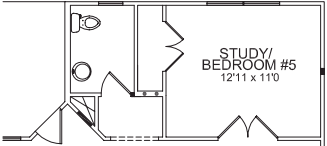
ALBANY



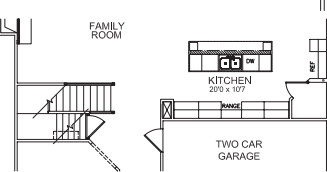
- 3074 Square Feet
- 4 Bedrooms, 3.5 Bathrooms
- 2-Story Covered Patio/Deck
- Study or 5th Bedroom Option



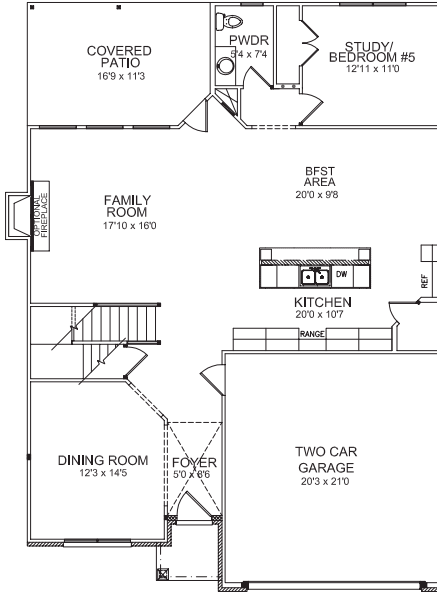
Optional Bedroom #5 and Full Bath



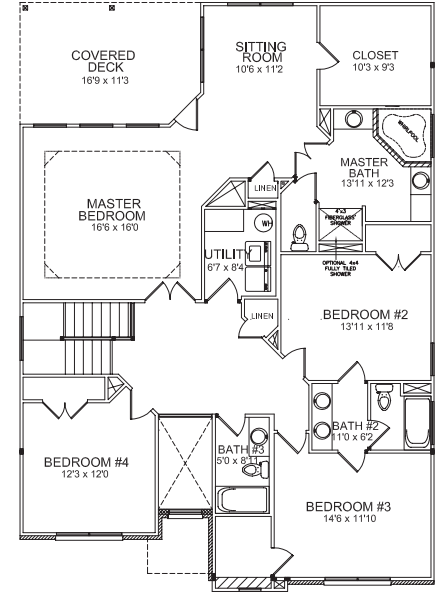
*Optional Study/Bedroom #5
5' Double Door No Glass - Standard
French Door Upgrade Available*



Kitchen Layout With Basement



Elevation A First Floor Plan

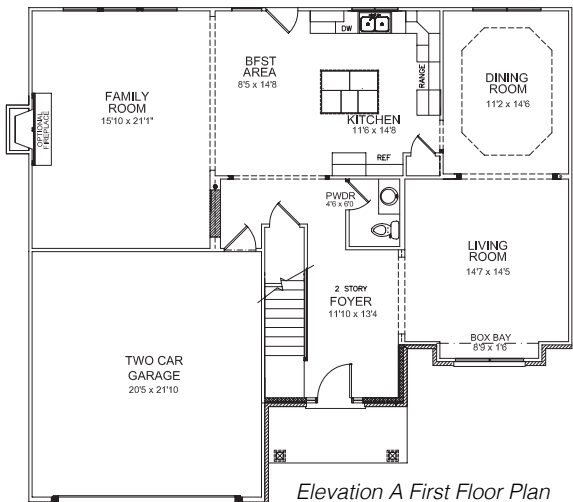


Elevation A Second Floor Plan

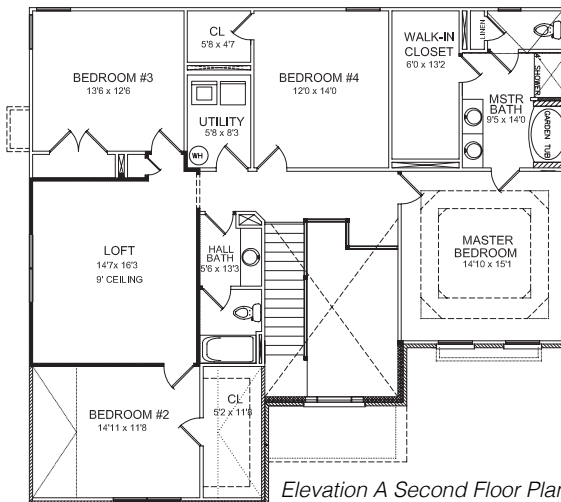
ARLINGTON II EXPANDED



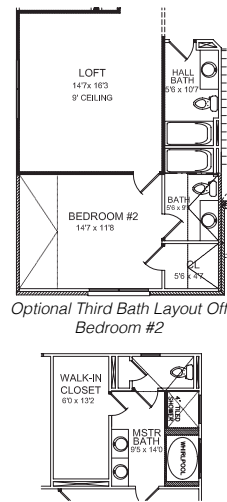
- 2997 Square Feet
- 4 Bedrooms, 2.5 Bathrooms
- Large Loft With 9' Ceilings
- Upstairs Utility Room



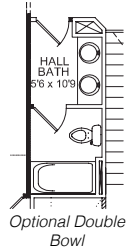
Elevation A First Floor Plan



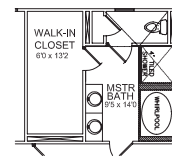
Elevation A Second Floor Plan



*Optional Third Bath Layout Off
Bedroom #2*



*Optional Double
Bowl*

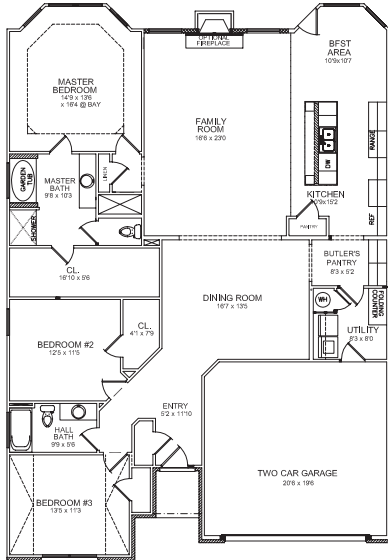


*Optional 5' Whirlpool
With Tile Deck and
4' Tiled Shower With
Glass Return*

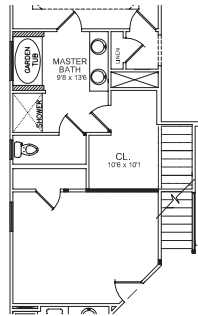
BALDWIN EXPANDED



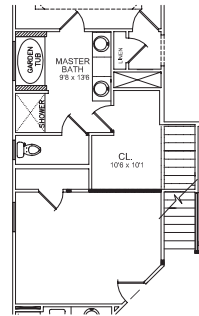
- 2067 Square Feet
- Upstairs Bonus Room Opt
- 3 Bedrooms, 2 Bathrooms
- Butler's Pantry



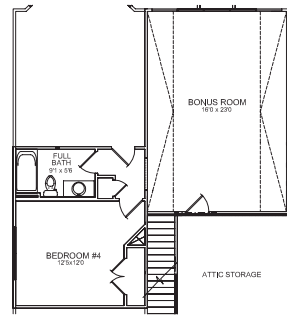
Elevation A First Floor Plan



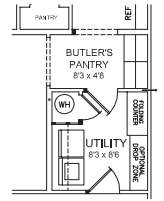
Optional Bonus Room With Std. Master Bath & Optional 6' Double Bowl Vanity



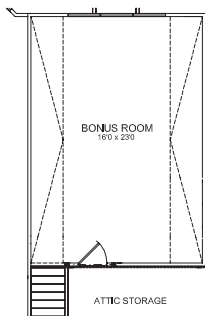
Optional Bonus Room With Std. Master Bath & Optional 7' Double Bowl Vanity



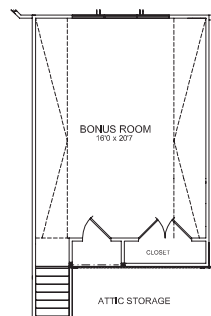
Optional Bonus Room With 4th Bedroom & Full Bath



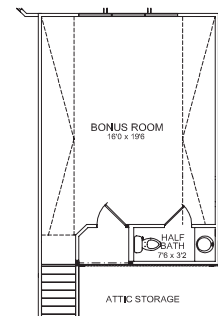
Optional Drop Zone Layout



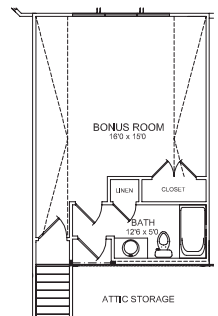
Optional Bonus Room



Optional Bonus Room With Closet



Optional Bonus Room With Half Bath

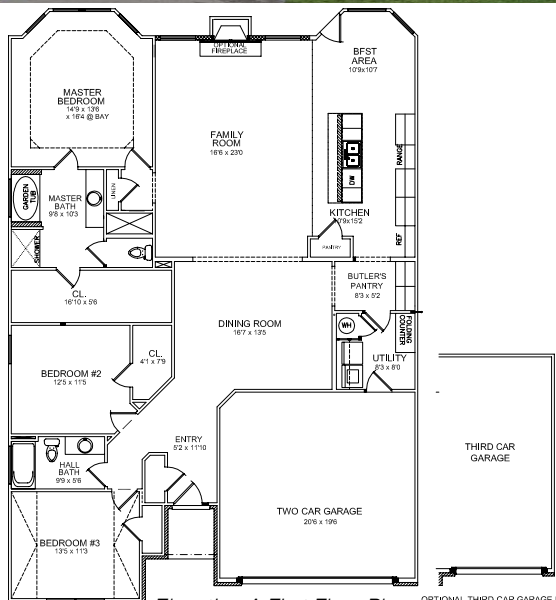


Optional Bonus Room With Closet & Full Bath

BALDWIN EXPANDED 3-CAR

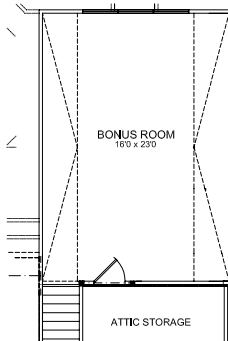


- 2067 Square Feet
- Upstairs Loft
- 3 Bedrooms, 2 Bathrooms
- Butler's Pantry

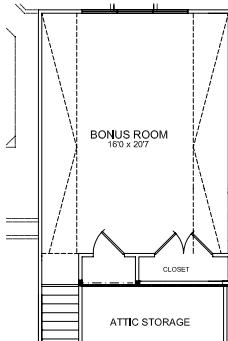


Elevation A First Floor Plan

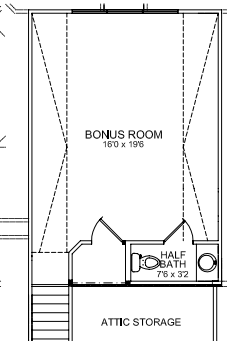
OPTIONAL THIRD CAR GARAGE-NOT AVAILABLE ON ALL LOTS.



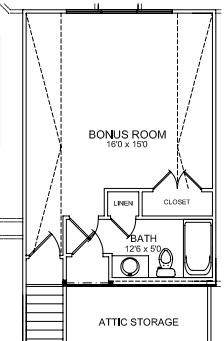
Optional Bonus Room



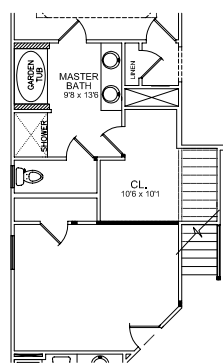
Optional Bonus Room With Closet



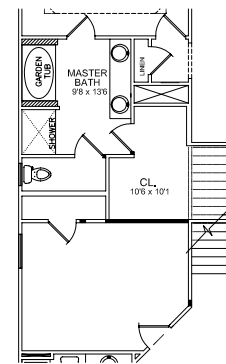
Optional Bonus Room With Closet & Half Bath



Optional Bonus Room With Closet & Full Bath



Optional Bonus Room With Std. Master Bath & Optional 6' Double Bowl Vanity

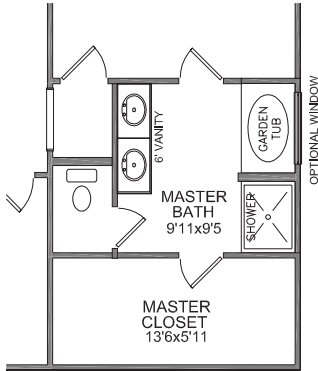


Optional Bonus Room With Std. Master Bath & Optional 7' Double Bowl Vanity

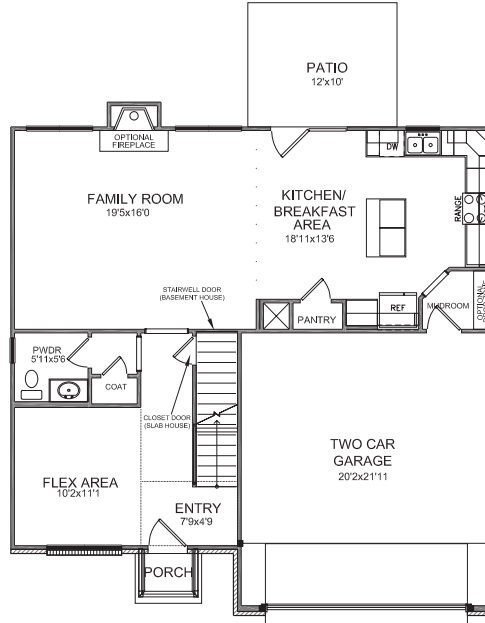
BRENDEN



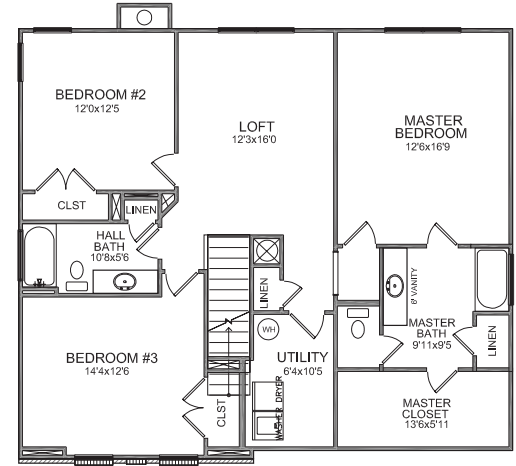
- 2293 Square Feet
- 3 Bedrooms, 2.5 Bathrooms
- Mudroom with Optional Drop Zone
- Upstairs Utility Room



Optional Master Bath Shown With 6' Double Bowl Vanity, 36x60 Garden Tub, & 4'x3' Fiberglass Shower



Elevation A First Floor Plan

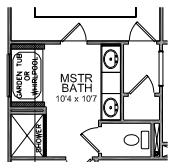


Elevation A Second Floor Plan

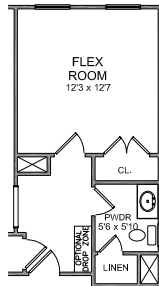
CANTERBURY



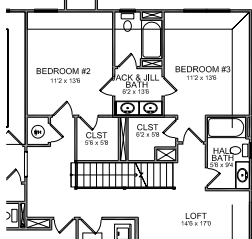
- 3359 Square Feet
- 4 Bedrooms, 3 Bathrooms
- Flex Room & Separate Loft Area
- Upstairs Utility Room



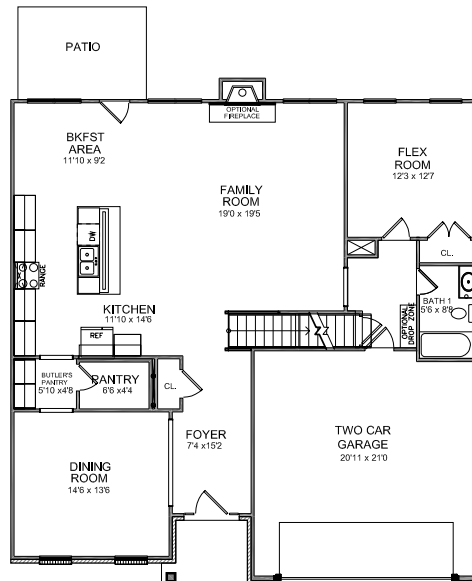
Optional Master Bath Shown With 4260 Drop-In Tub and 4'x4' Shower



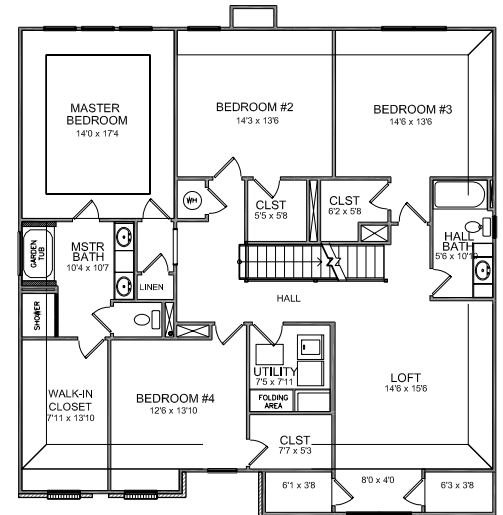
Optional Powder Room



Optional Jack & Jill Bath With Bedroom #2 and #3. Hall Bath Changes From 60" Vanity to 42" Vanity



Elevation A First Floor Plan

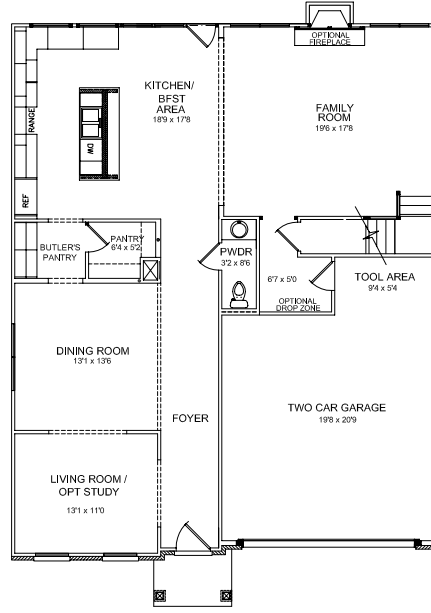


Elevation A Second Floor Plan

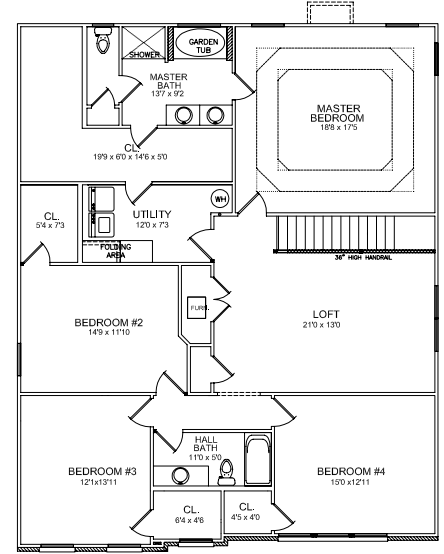
CAVANAUGH II



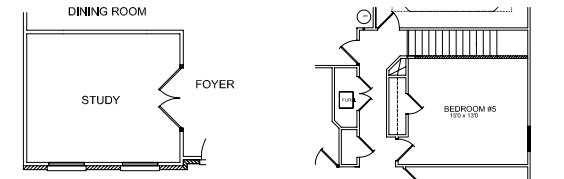
- 3262 Square Feet
- 4 Bedrooms, 2.5 Bathrooms
- Large Loft or 5th Bedroom
- Formal Living Room & Dining Room



Elevation A First Floor Plan

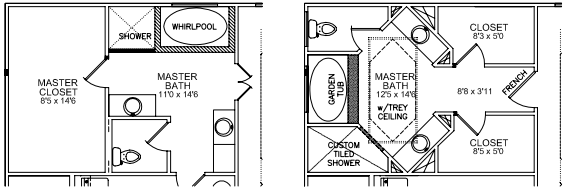


Elevation A Second Floor Plan



Optional Study With Full Wall at Dining Room and 5' French Doors From Foyer

Optional Bedroom #5



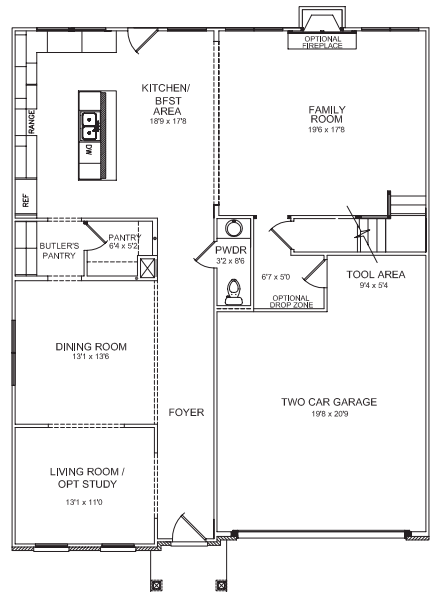
Luxury Option 1: Layout Shown With Optional 6' Whirlpool With Glass Return Panel and Fully Tiled Shower and Split Vanities

Luxury Option 2: Layout Includes Garden Tub, Custom Sized Fully Tiled Shower, and 5' Split Vanities

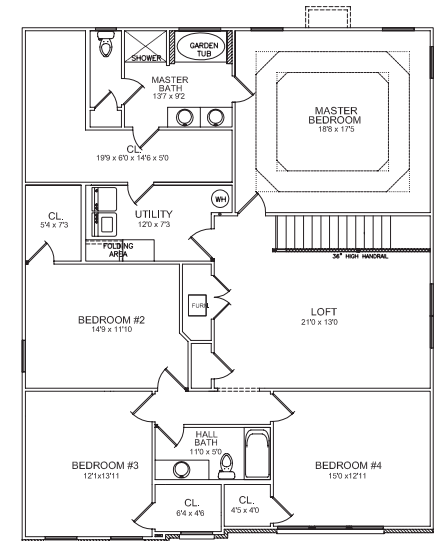
CAVANAUGH II EXPANDED



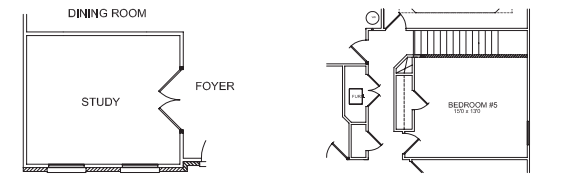
- 3307 Square Feet
- 4 Bedrooms, 2.5 Bathrooms
- Butler's Pantry
- Study With Double Doors



Elevation A First Floor Plan

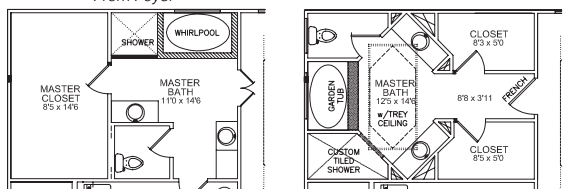


Elevation A Second Floor Plan



Optional Study With Full Wall at Dining Room and 5' French Doors From Foyer

Optional Bedroom #5



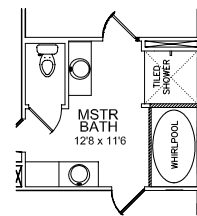
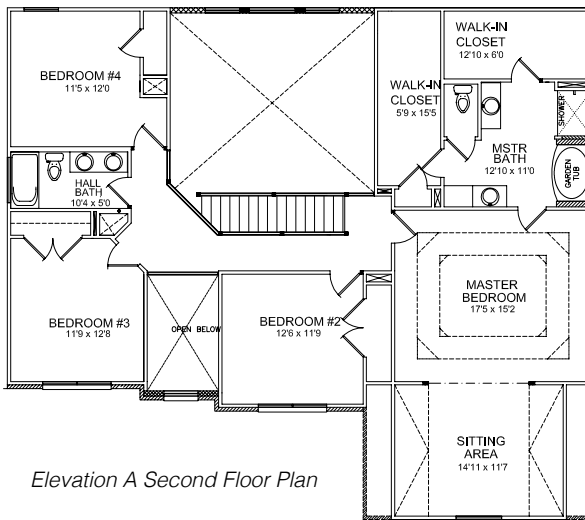
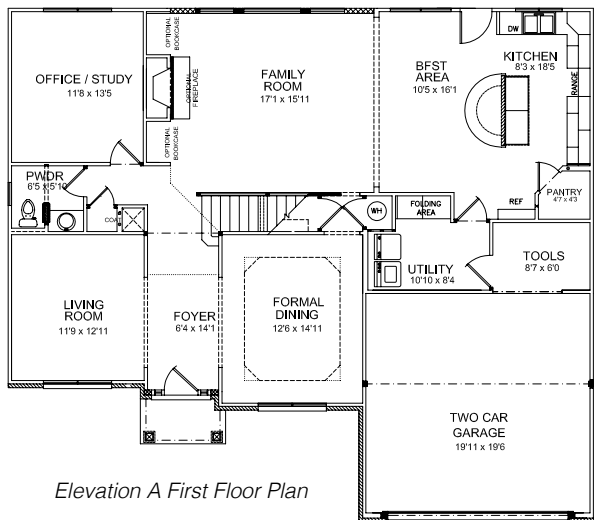
Luxury Option 1: Layout Shown With Optional 6' Whirlpool With Glass Return Panel and Fully Tiled Shower and Split Vanities

Luxury Option 2: Layout Includes Garden Tub, Custom Sized Fully Tiled Shower, and 5' Split Vanities

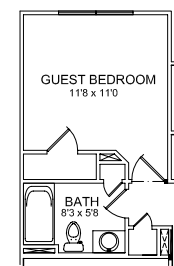
CHARLESTON II



- 3065 Square Feet
- 4 Bedrooms, 2.5 Bathrooms
- Sitting Area in Master Bedroom
- Circular Island Top/Breakfast Area



Master Bath Shown With Optional 6' Whirlpool & 4'x4' Tiled Shower

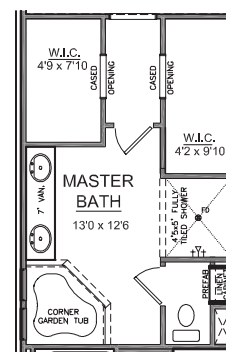
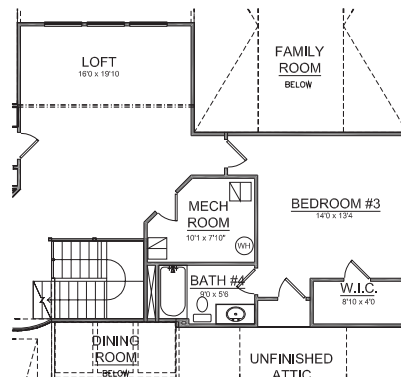
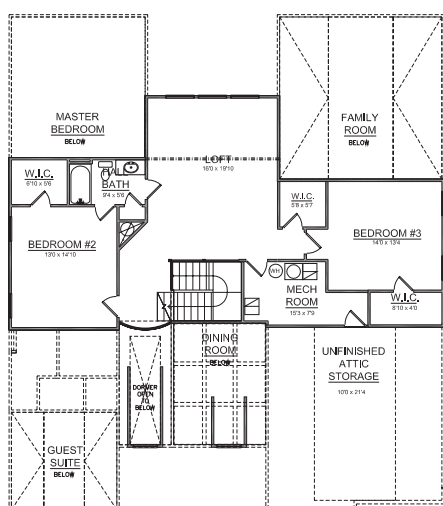
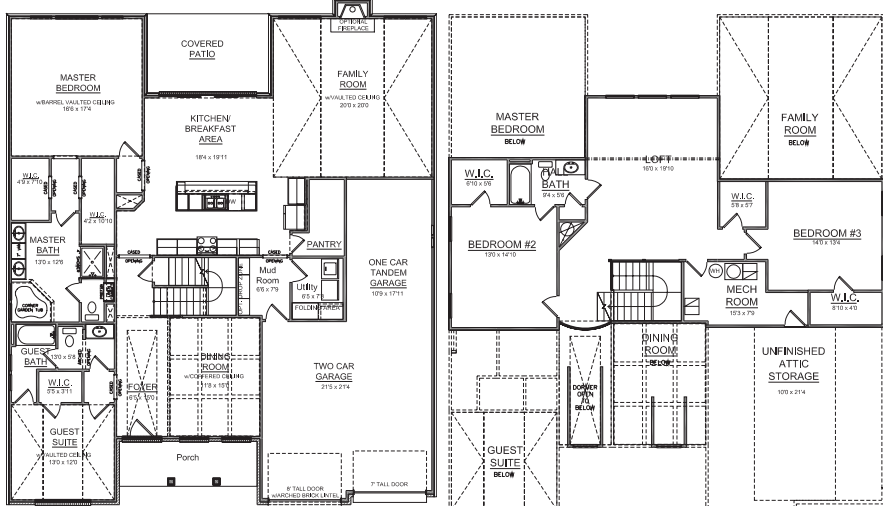


Optional Full Bath Shown With Optional Bedroom

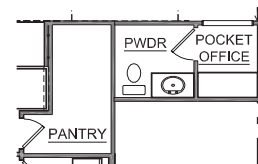
CHATFIELD



- 3449 Square Feet
- 4 Bedrooms, 3 Bathrooms
- 1st Floor Master Suite & 1st Floor Guest Suite
- Huge Walk-In Pantry



Optional Pocket Office

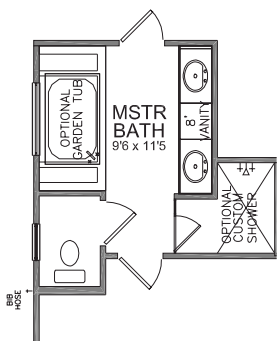


Optional Half Bath

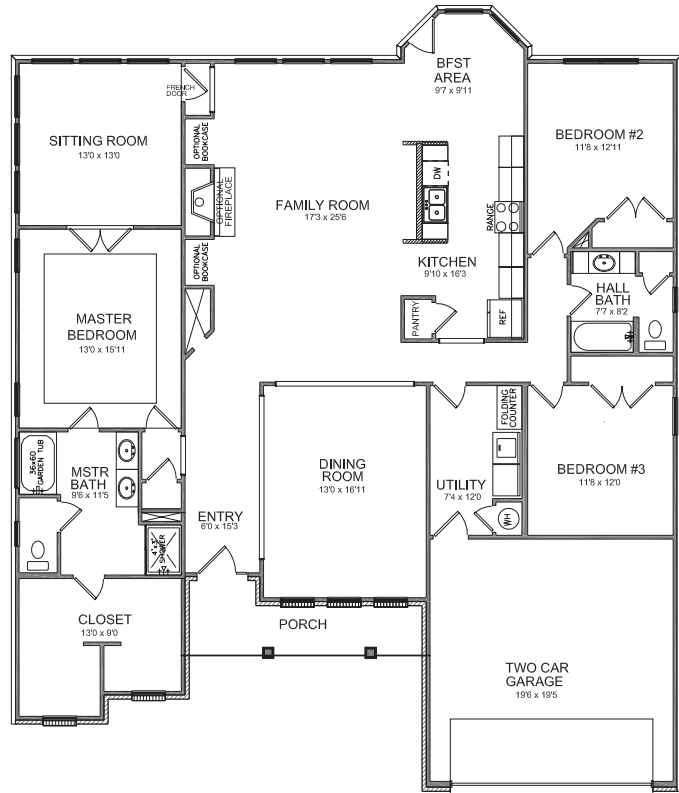
CLAREMONT II



- 2352 Square Feet
- 3 Bedrooms, 2 Bathrooms
- Split Bedroom Plan
- Open Design



Master Bath Shown With Optional Drop-In Garden Tub With Tile Deck, 8' Vanity, & Custom Tiled Shower

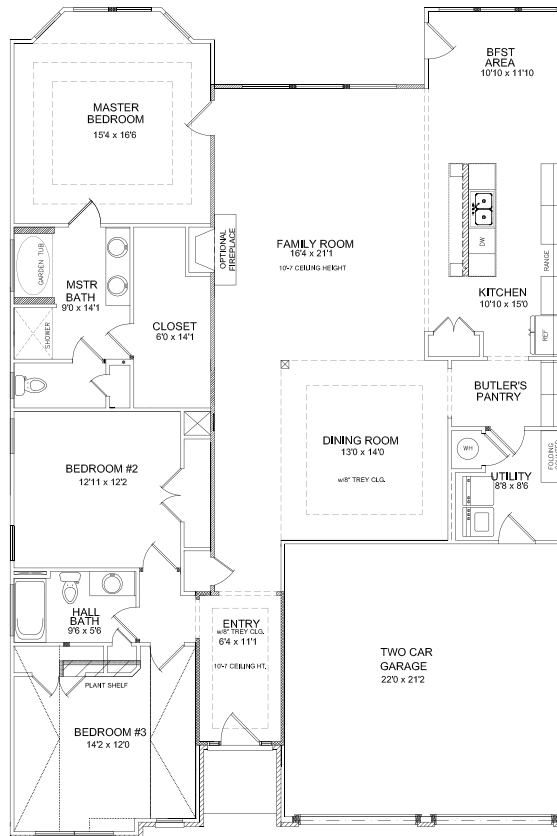


Elevation A First Floor Plan

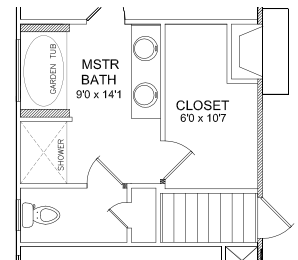
FITZGERALD



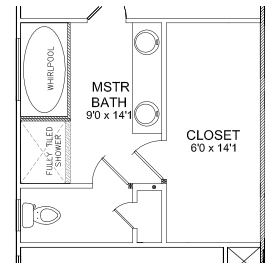
- 2129 Square Feet
- 3 Bedrooms, 2 Bathrooms
- 10' Ceilings in Entry & Family Room
- Butler's Pantry



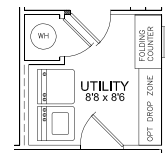
Elevation A First Floor Plan



Stairs for Basement Layout Shown With Standard Bath



Optional 7' Double Bowl Vanity, 42x72 Whirlpool With Tiled Deck, & 4'x3'8" Fully Tiled Shower With Glass Return Panel



Optional Utility Layout Shown With Drop Zone & 21" Deep Folding Counter

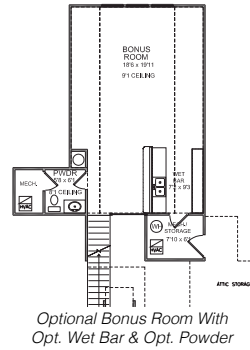
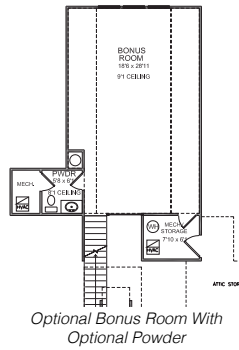
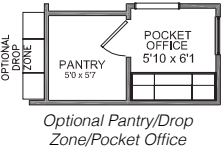
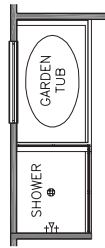
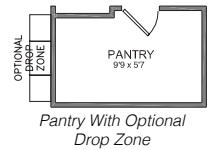
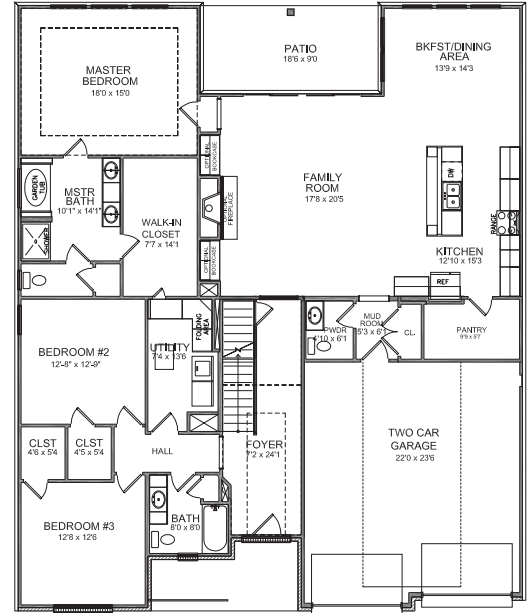
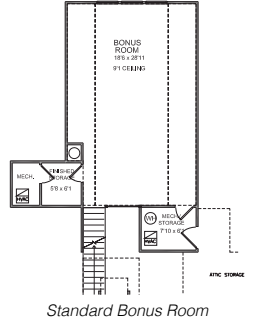
GLENSTONE



- 2349 Square Feet
- 3 Bedrooms, 2.5 Bathrooms
- Extra Bonus Room Option
- Covered Patio

This floor plan is only when the bonus room option is selected. The original floor plan will be used when there is no bonus room.

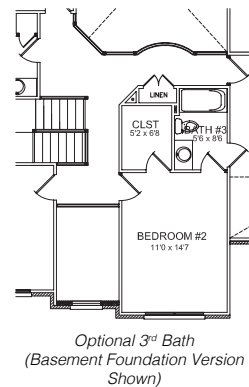
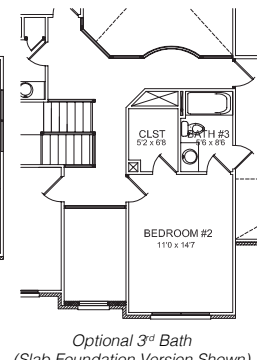
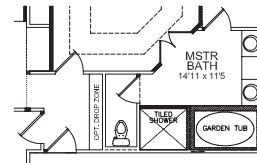
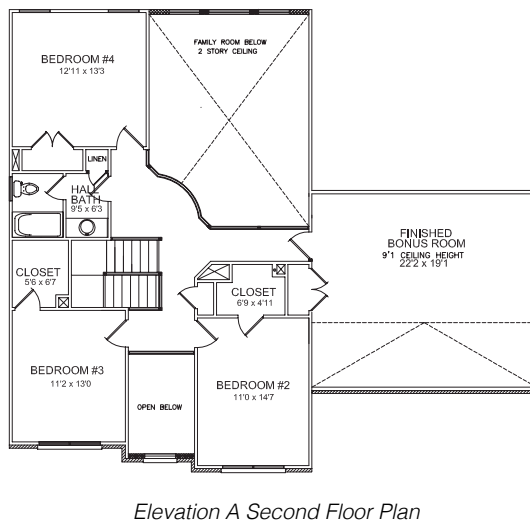
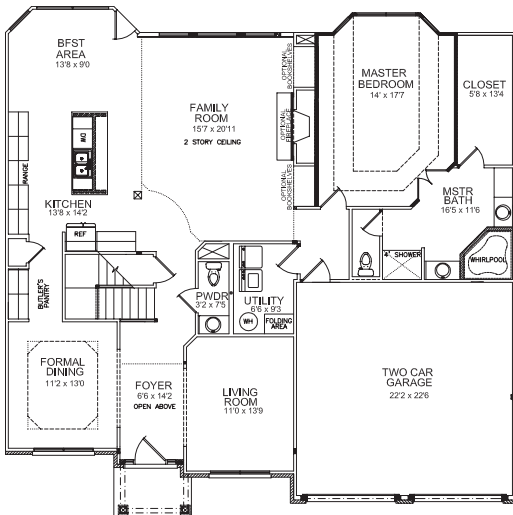
*Options for Bonus Room
All Bonus Room Options Include Attic Storage Above Garage as Std. Access Attic Through Mech/Storage Room*



HARTFORD II



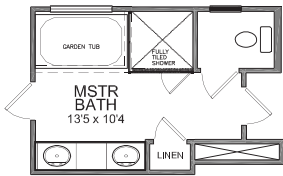
- 3322 Square Feet
- 4 Bedrooms, 2.5 Bathrooms
- 1st Floor Master Bedroom
- 2-Story Family Room



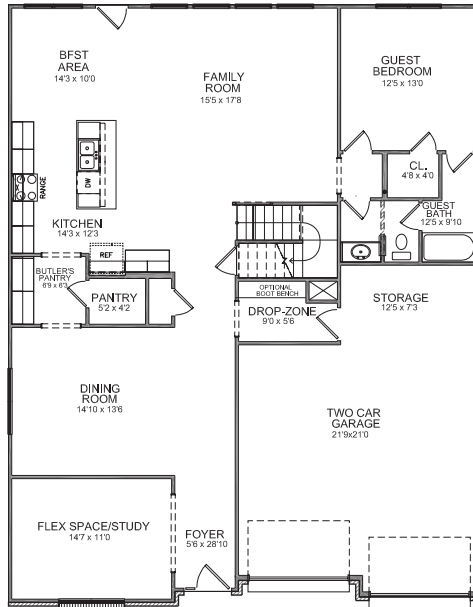
HAWTHORNE



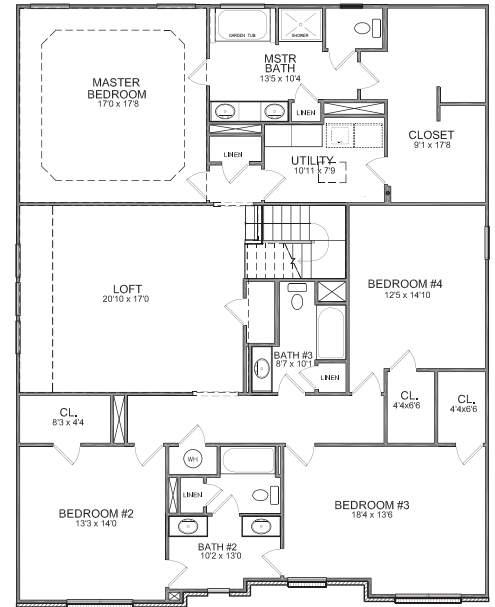
- 4067 Square Feet
- 4 Bedrooms, 4 Bathrooms
- 1st Floor Guest Bedroom
- Oversized Upstairs Loft



Optional Master Bath
Shown With a 42x72 Drop-In Garden Tub
With Tile Surround & 4'x4' Fully Tiled Shower
With Glass Return Panel



Elevation A First Floor Plan

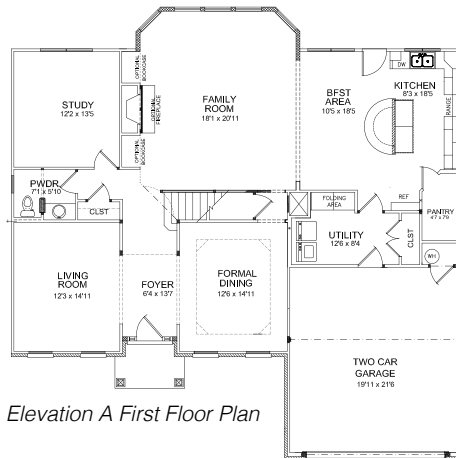


Elevation A Second Floor Plan

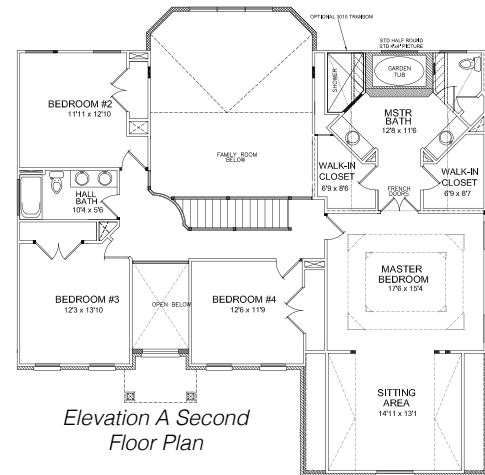
HUDSON



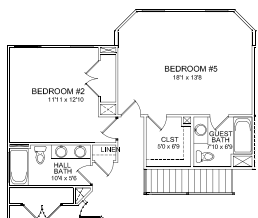
- 3371 Square Feet
- 4 Bedrooms, 2.5 Bathrooms
- 2-Story Foyer With Balcony
- Oversized Mudroom or Utility Room



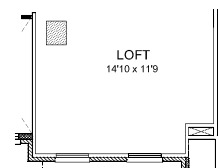
Elevation A First Floor Plan



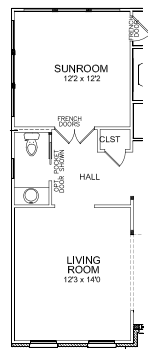
Elevation A Second Floor Plan



Optional Bedroom #5
With Private Bath



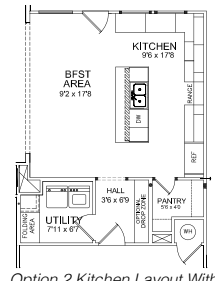
Optional 2nd Floor Loft
(In Lieu of Bedroom #4)



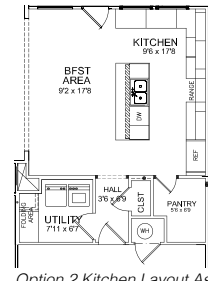
1st Floor Optional
Sunroom & Living
Room



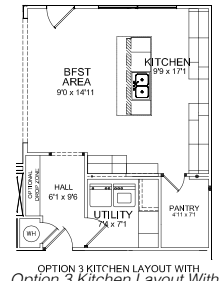
1st Floor Optional
Guest Suite &
Study



Option 2 Kitchen Layout With
Revised Island, Utility, Pantry,
& Optional Drop Zone



Option 2 Kitchen Layout As
Shown Includes Revised
Island, Utility, & Pantry

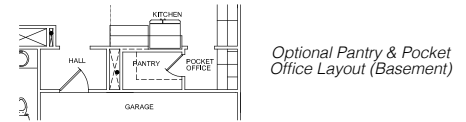
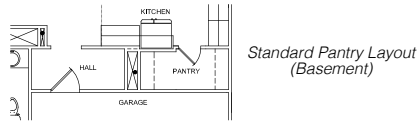
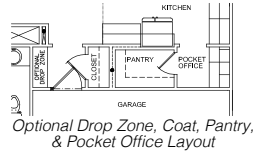
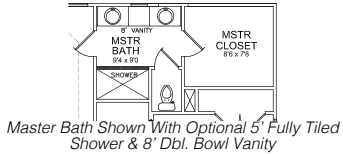
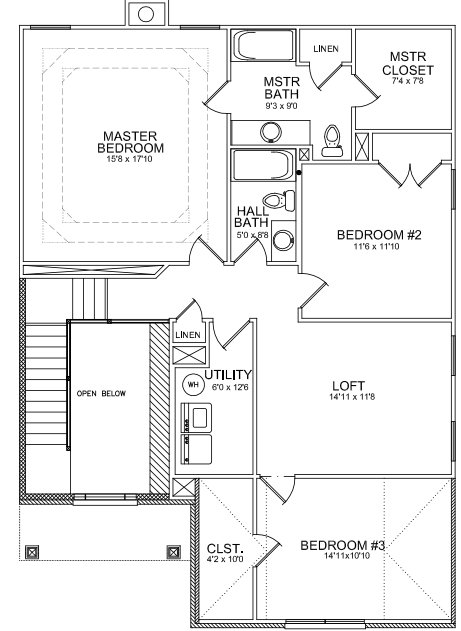
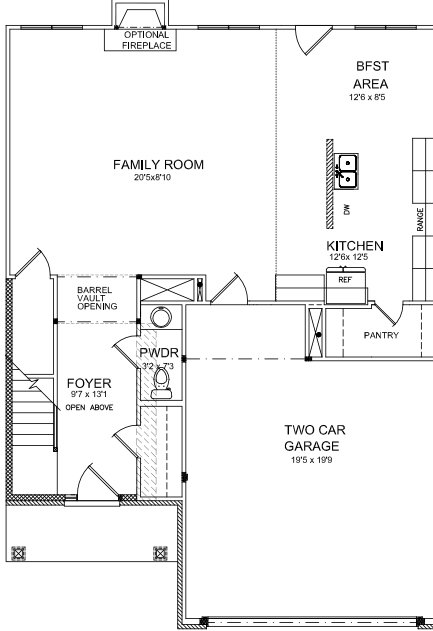
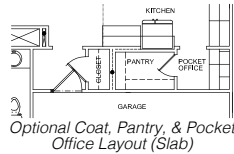
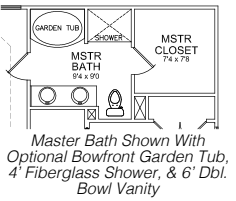
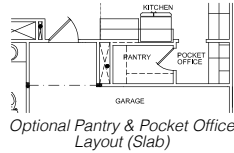
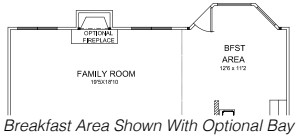


OPTION 3 KITCHEN LAYOUT WITH
Revised Island, Utility, Pantry,
& Optional Drop Zone

INGLEWOOD



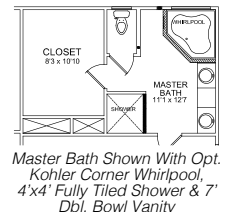
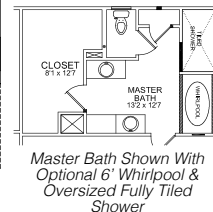
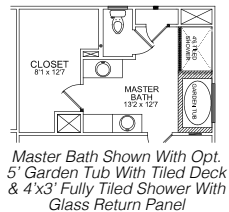
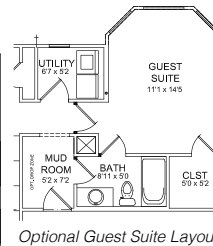
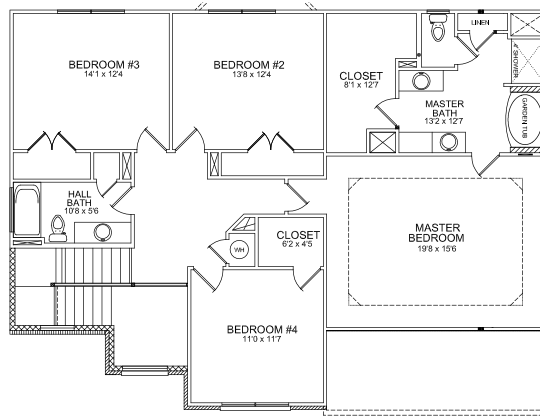
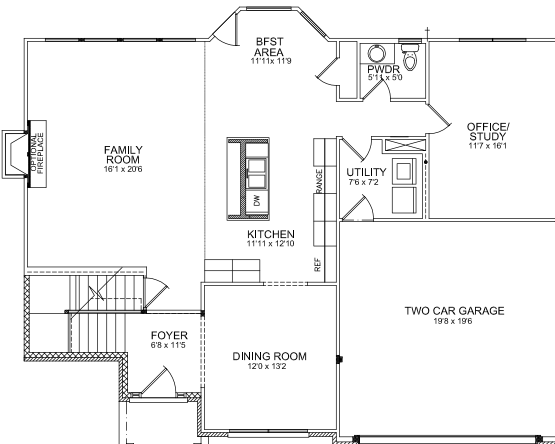
- 2179 Square Feet
- 2-Story Foyer
- 3 Bedrooms, 2.5 Bathrooms
- 2nd Floor Loft Area



JACKSON II



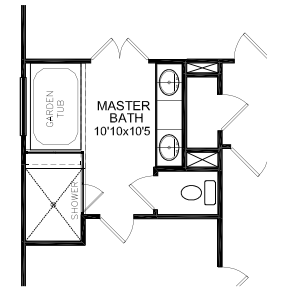
- 2646 Square Feet
- 4 Bedrooms, 2.5 Bathrooms
- 1st Floor Office/Study or Guest Suite Option
- 1st Floor Utility/Mudroom



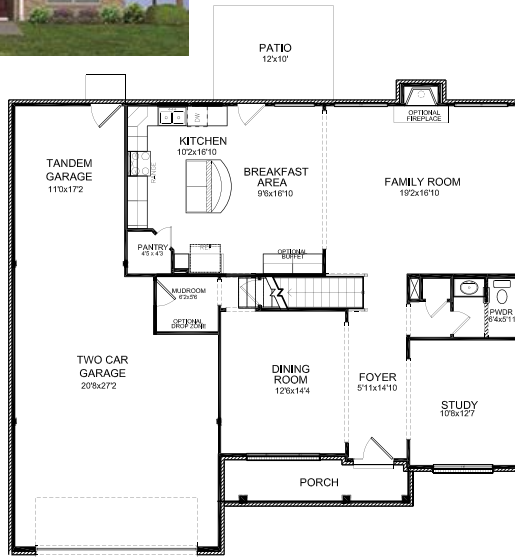
LIVINGSTON



- 3176 Square Feet
- 4 Bedrooms, 2.5 Bathrooms
- 3-Car Tandem Garage
- Open Kitchen With Elliptical Island



Optional 6' Garden Tub With 5' Shower



Elevation A First Floor Plan

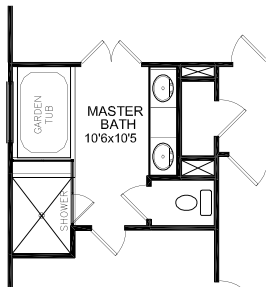


Elevation A Second Floor Plan

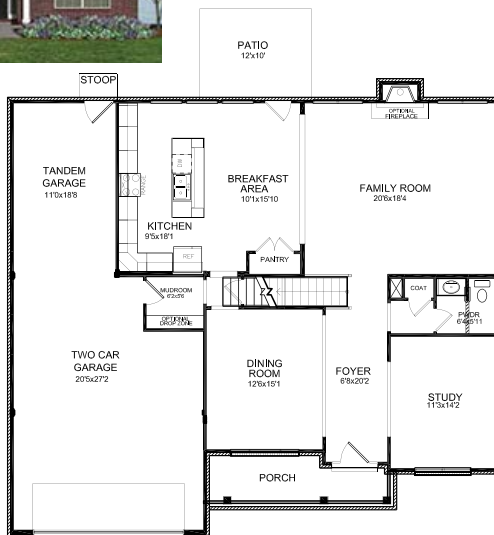
LIVINGSTON EXPANDED



- 3520 Square Feet
- 4 Bedrooms, 3.5 Bathrooms
- 3-Car Tandem Garage
- Triple Window in Master



Optional 6' Garden Tub With 5' Shower



Elevation A First Floor Plan

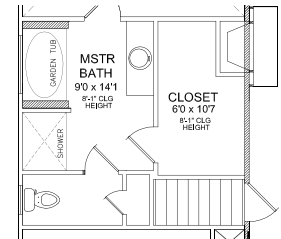
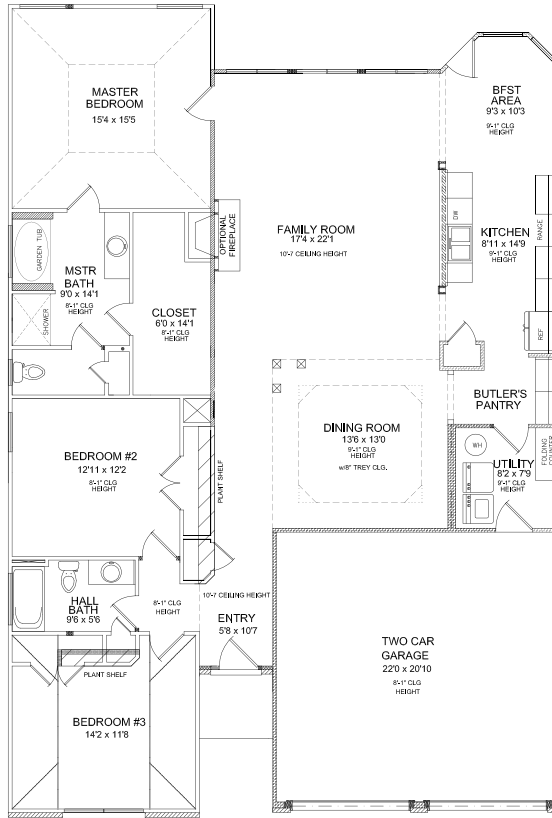


Elevation A Second Floor Plan

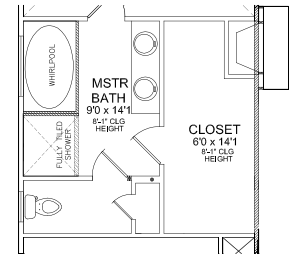
MANHATTAN EXPANDED



- 2018 Square Feet
- 3 Bedrooms, 2 Bathrooms
- Utility/Mudroom
- Butler's Pantry



Stairs For Basement Layout Shown With Standard Bath



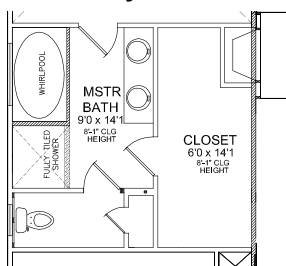
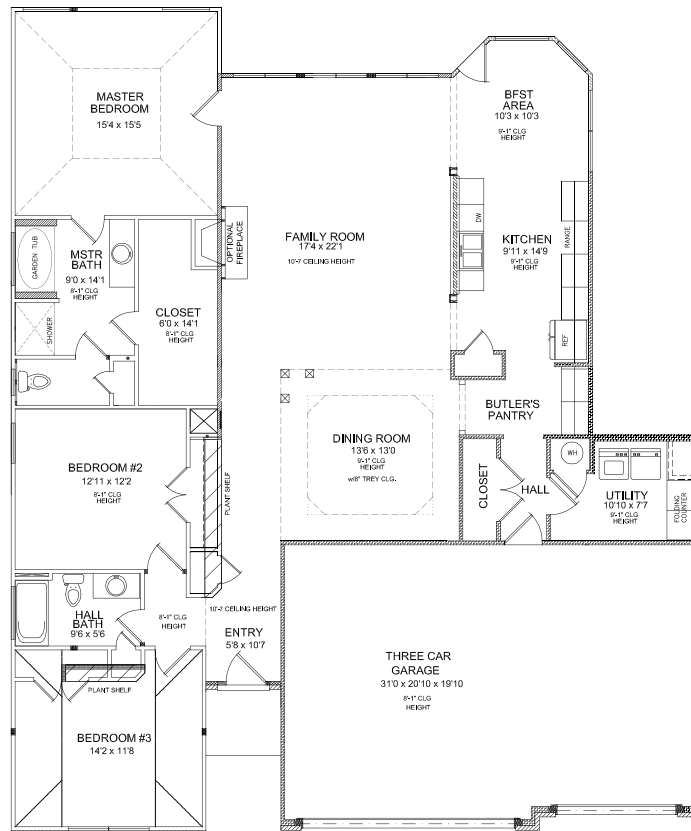
Optional 6" Double Bowl Vanity, 42x72 Whirlpool With Tiled Deck, & 4'x3'8" Fully Tiled Shower With Glass Return Panel

Elevation A First Floor Plan

MANHATTAN EXPANDED 3-CAR



- 2124 Square Feet
- 3 Bedrooms, 2 Bathrooms
- 3-Car Garage
- Butler's Pantry



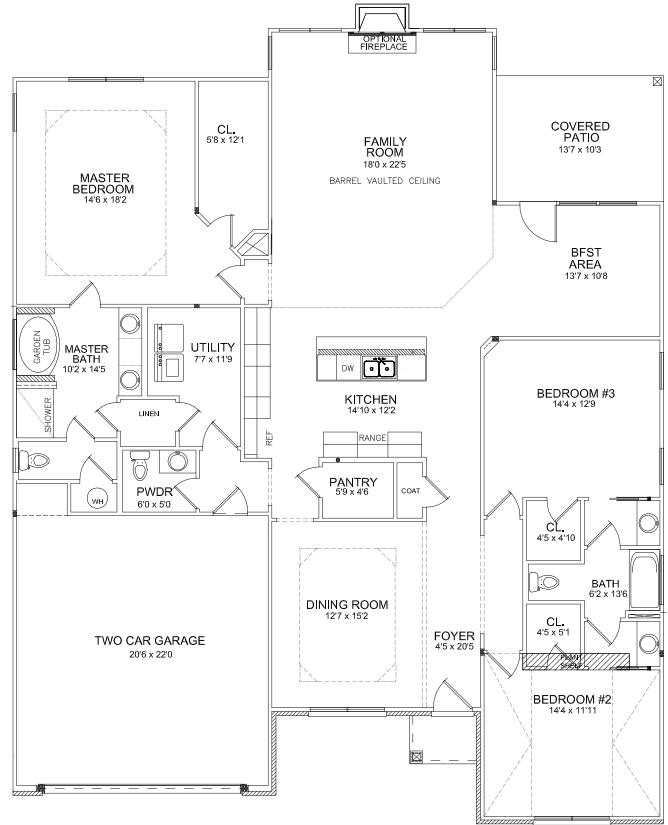
Optional 6" Double Bowl Vanity, 42"x72" Whirlpool With Tiled Deck, & 4'x3'8" Fully Tiled Shower With Glass Return Panel

Elevation A First Floor Plan

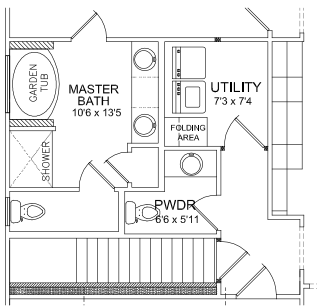
MONROE



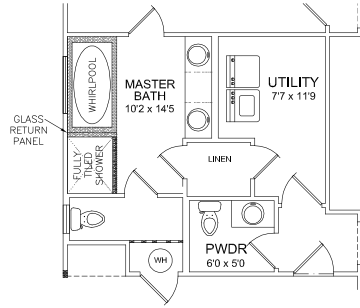
- 2476 Square Feet
- 3 Bedrooms, 2.5 Bathrooms
- Family Room With Barrel-Style Vaulted Ceiling
- Covered Patio



Elevation A First Floor Plan



Basement Stairs Location

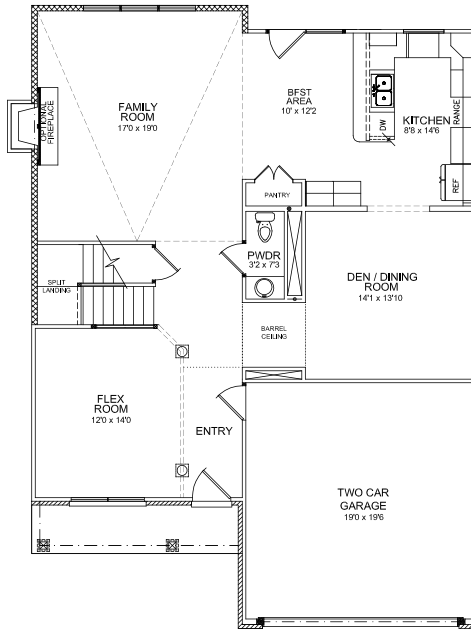


Master Bath Shown With Optional 36"x72" Whirlpool, & 4'x3'6" Fully Tiled Shower With Glass Return Panel

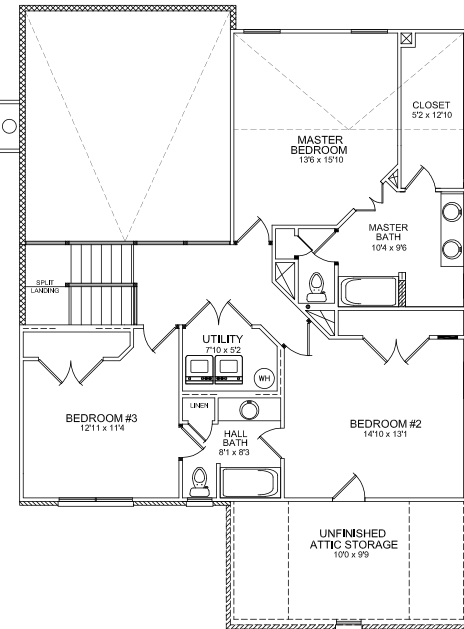
MONTEGO III



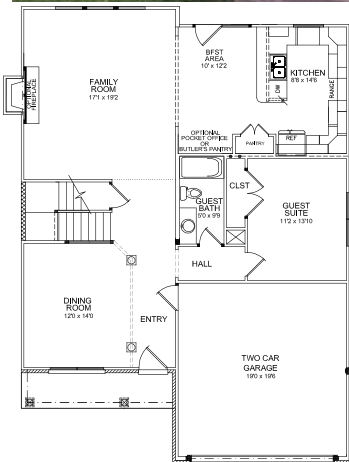
- 2323 Square Feet
- 3 Bedrooms, 2.5 Bathrooms
- Den/Dining Room With a Barrel Ceiling Pass Through
- 1st Floor Guest Suite Option



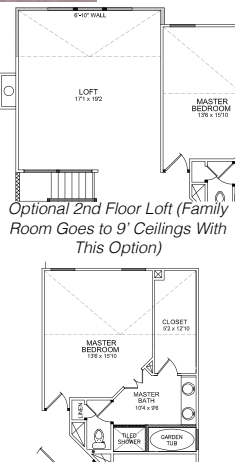
Elevation A First Floor Plan



Elevation A Second Floor Plan



Optional Guest Suite Layout - Note: Kitchen Changes With Optional Features. Family Room Shown Reflects Loft Option Above



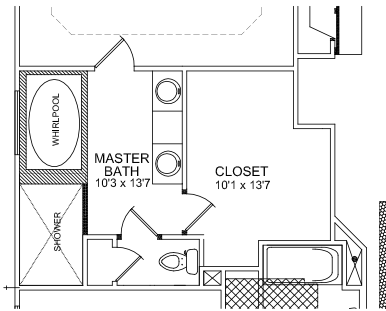
Optional 2nd Floor Loft (Family Room Goes to 9' Ceilings With This Option)

Optional 36"x72" Whirlpool & 4'x3'4" Fully Tiled Shower

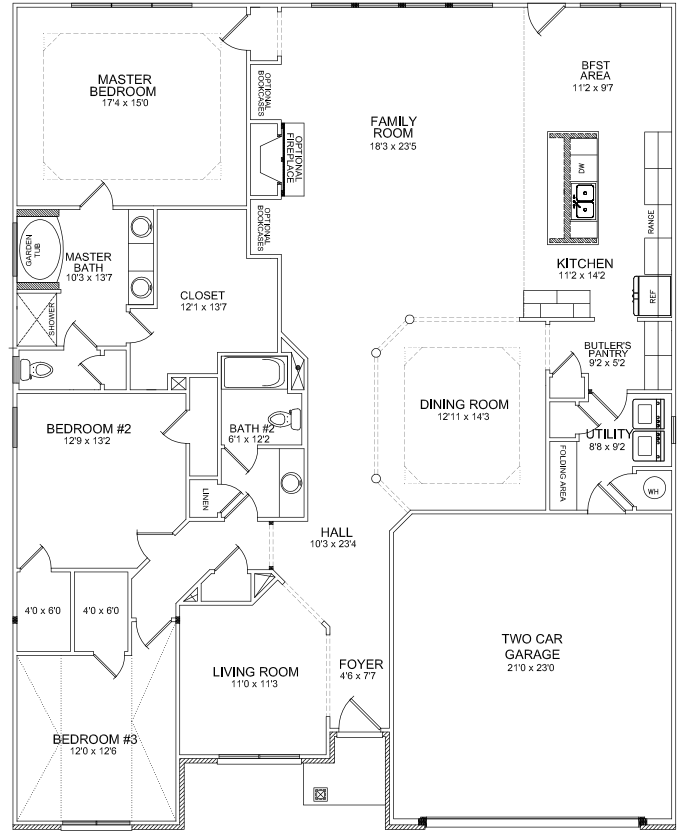
RAMSAY



- 2586 Square Feet
- 3 Bedrooms, 2 Bathrooms
- Open Design
- Butler's Pantry



Upgraded Master Bath Shown
With 42"x72" Whirlpool & Custom
Tiled Shower

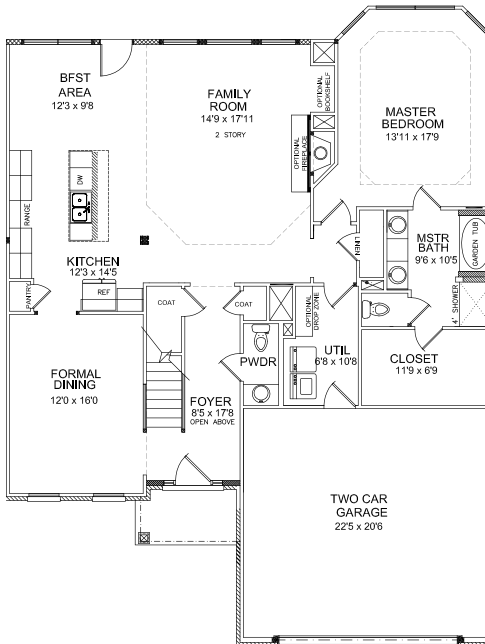


Elevation A First Floor Plan

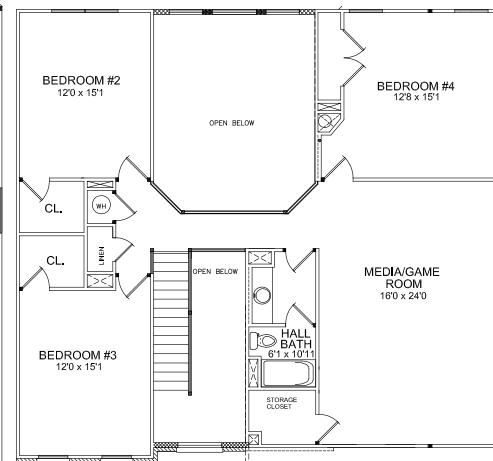
SPENCER II



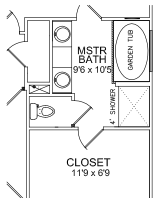
- 2951 Square Feet
- 4 Bedrooms, 2.5 Bathrooms
- 9' Ceilings on 1st Floor
- 1st Floor Master Suite



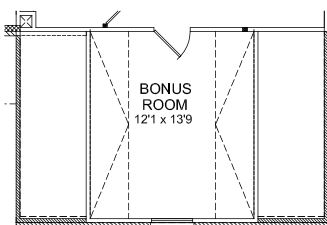
Elevation A First Floor Plan



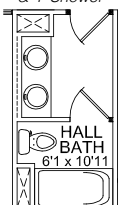
Elevation A Second Floor Plan



Optional 6' Garden Tub
& 4' Shower



Optional Bonus Room Layout

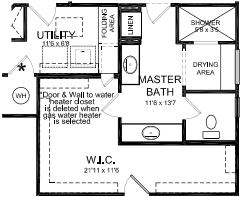


Optional Double Bowl

TALBOT



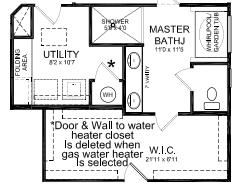
- 2716 Square Feet
- 4 Bedrooms, 2.5 Bathrooms
- Covered Front Porch
- Pocket Office



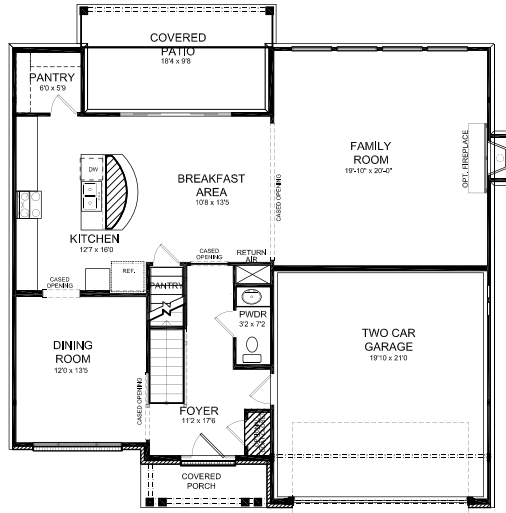
Optional Bath 1



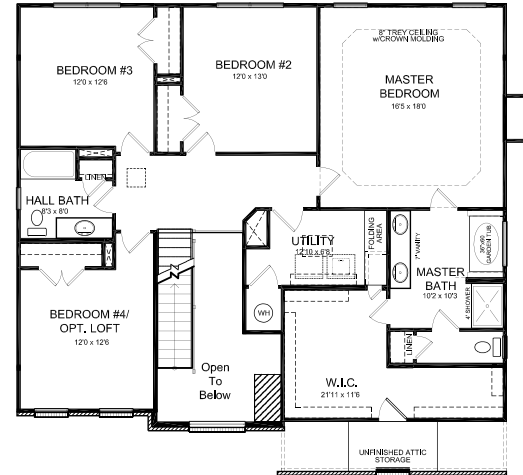
Optional Pocket Office



Optional Bath 2



Elevation A First Floor Plan
Shown With Optional Coat Closet In Foyer

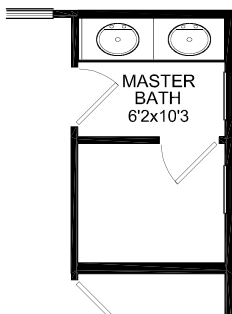


Elevation A Second Floor Plan

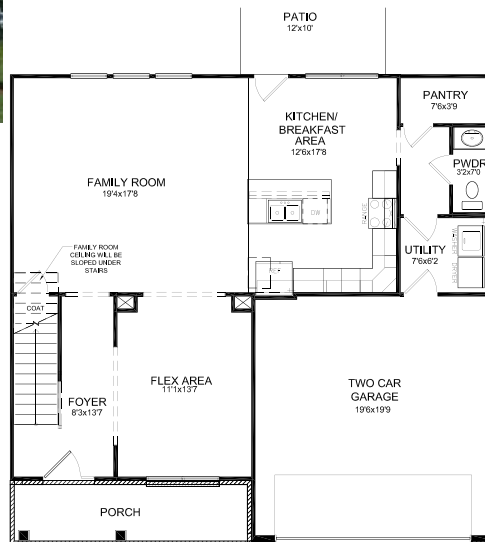
TORRINGTON



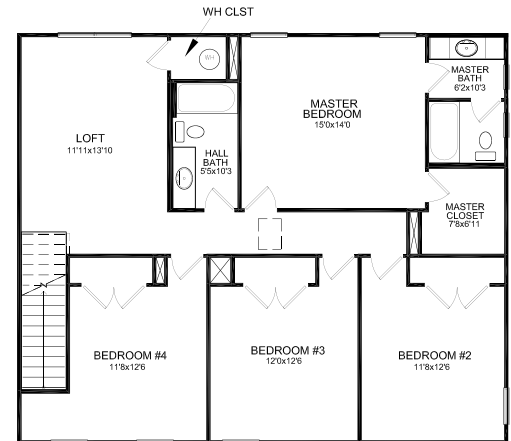
- 2355 Square Feet
- 4 Bedrooms, 2.5 Bathrooms
- Walk-In Pantry
- Kitchen With Island Dining Counter



Optional Double Bowl
Vanity



Elevation A First Floor Plan

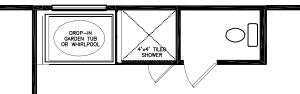


Elevation A Second Floor Plan

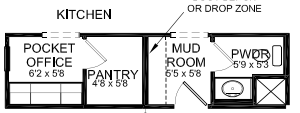
WAKEFIELD



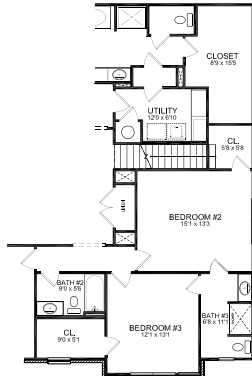
- 3576 Square Feet
- 4 Bedrooms, 2.5 Bathrooms
- Upstairs Loft With 9' Ceilings
- Open Concept Family Room, Breakfast Area, & Kitchen



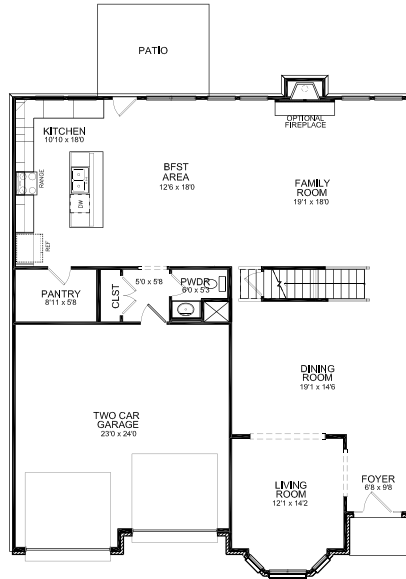
Optional Master Bath Shown With A 42"x60" Drop-In Garden Tub With Tile Surround & 4'x4' Fully Tiled Shower With Glass Return Panel



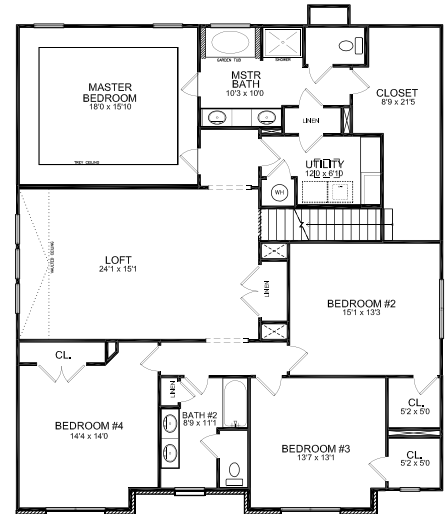
Optional Pocket Office Shown With A Smaller Pantry & Mudroom With Optional Drop Zone



Optional Jack & Jill Bath Shown With Revised Hall Bath #2 & Closet Locations



Elevation A First Floor Plan

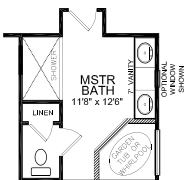


Elevation A Second Floor Plan

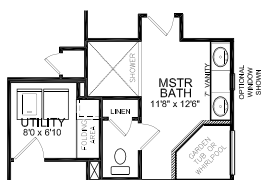
WAVERLY



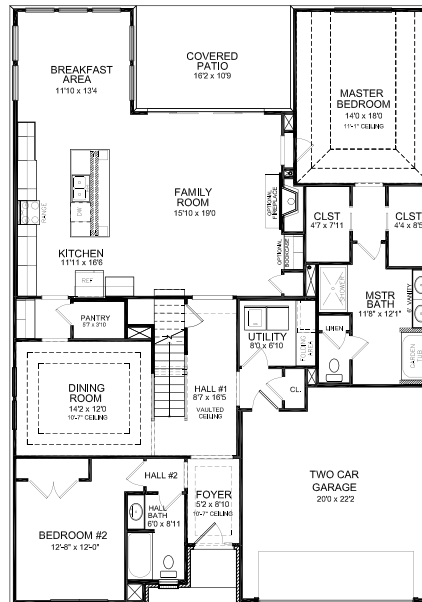
- 2811 Square Feet
- 3 Bedrooms, 3 Bathrooms
- Butler's Pantry
- Oversized Covered Patio



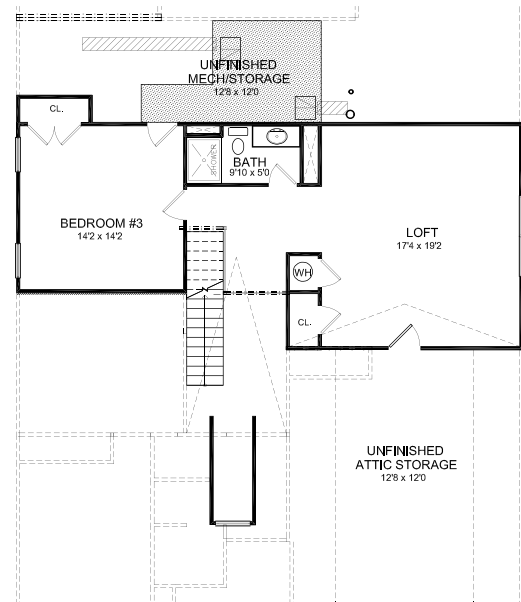
Optional Bath #1: Shown With Corner Garden Tub/Whirlpool, 3'3x5'6" Fully Tiled Shower, & Linen Closet



Optional Bath #2: Shown With Corner Garden Tub/Whirlpool, 4'7x5'0" Fully Tiled Shower, & Linen Closet



Elevation A First Floor Plan

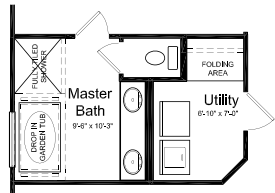


Elevation A Second Floor Plan

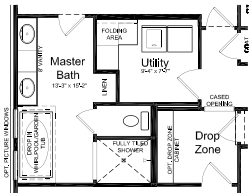
WESTMONT II



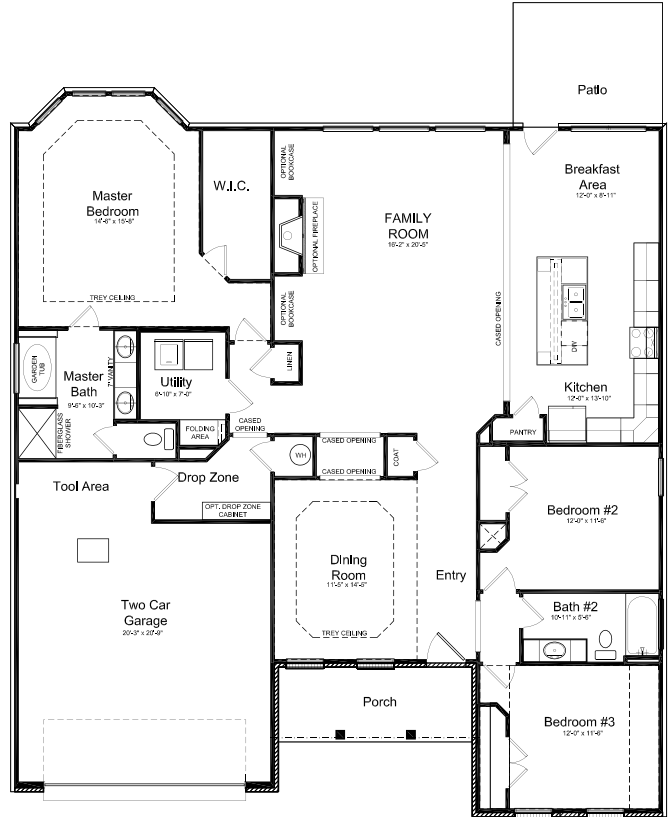
- 2128 Square Feet
- 3 Bedrooms, 2 Bathrooms
- Split Bedroom Ranch
- Open Design



Standard Master Bath Layout With Drop In Tub & Fully Tiled Shower



Optional Upgrade Master Bathroom

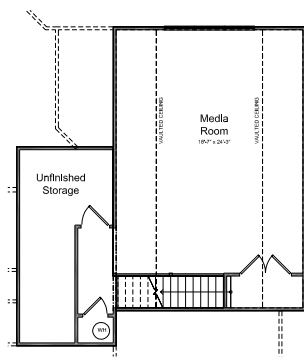


Elevation A First Floor Plan

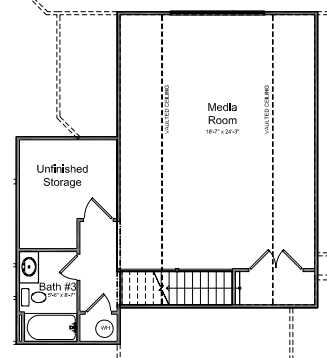
WESTMONT II EXPANDED



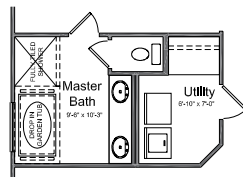
- 2173 Square Feet
- 3 Bedrooms, 2 Bathrooms
- Bay Window In Master Bedroom
- Media Room Option



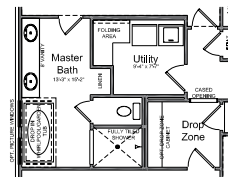
Media Room Option



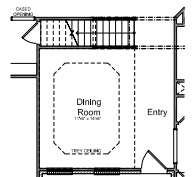
Media Room Option With Optional Full Bath



Standard Master Bath With Drop-In Tub & Fully Tiled Shower Shown



Optional Master Bath



1st Floor Stair Location For Media Room

INDEX OF PLAN MODIFICATIONS

At The Park in Maryville, our floor plans are modified to meet Blount County building code enforcement requirements regarding stairs. The following list describes the modifications made to each plan, so they can be accurately compared to the same floor plans seen in other locations.

Albany: An extra step and a split landing design are added.

Arlington II Expanded: The front foyer wall moves forward 14”.

Baldwin Expanded: When a bonus room is added, the stairs are 15” longer, bringing the newel post at the bottom of the stairs closer to the angled wall at the back of the garage.

Baldwin Expanded 3-Car: When a bonus room is added, the stairs are 15” longer, bringing the newel post at the bottom of the stairs closer to the angled wall at the back of the garage.

Brenden: This version adds 15” to the overall length of the stair run. The entry is reduced by 5” and the closet under the stairs is 7” deeper. The depth of the loft has been reduced by 9”, and the linen closet is 9” wider.

Canterbury: The space between closet under stairs and any optional drop zone cabinet is reduced by 8”.

Cavanaugh II: A step is added to the flight of stairs from the landing to the second floor, and the lower run of stairs has an adjusted riser height, with the landing adjusted to fit the new stair end location.

Cavanaugh II Expanded: A step is added to the flight of stairs from the landing to the second floor, and the lower run of stairs has an adjusted riser height, with the landing adjusted to fit the new stair end location.

Charleston II: The width of the house increases by 1’, and the bottom of the stairs is slightly modified for deeper treads.

Chatfield: An extra step and a split landing are added. Space between the newel post and master bath wall is reduced by 10”, and space between the closet door and wall is reduced by 6” along with the cased opening.

Claremont II: The bonus room option is not offered with this plan in The Park.

Fitzgerald: No plan changes are required for this home in The Park.

Glenstone: The plan changes only with when the Media Room option is added, which adds one step to the stairs and adds 18” to the depth of the house through the garage/entry/utility room. Bedroom #2 has 9” added and Bedroom #3 has 6” added. Closets for Bedrooms 2 and 3 are 3” deeper.

Hartford II: The stairs stringers are reduced by 2” at the bottom of each stair run. The hall between entry and family room is reduced by 5”, and space between handrail and linen closet on 2nd floor by is reduced by 4”.

Hawthorne: The width of the loft and cased opening going into master bedroom are reduced by 6”, and a split landing is added.

Hudson: The width of the house increases by 1’, and the bottom of the stairs is slightly modified for deeper treads.

Inglewood: The stairs have 1 added step, and a landing is added at the bottom of the stairs. Twelve inches are added to the width of the house, in the entry and family room, and 10” are added to the depth of the house in the entry only. The utility room layout is reversed so that the washer and dryer back up to the entry.

Jackson II: A split landing is added, and the landing width is reduced by 6”.

Livingston: The overall length of the steps is increased by 15”, handrail in loft is longer.

Livingston Expanded: The stairs are 1 step longer, and they shift 10” towards powder room. The stair opening is increased for 6’-8” head room clearance.

Manhattan Expanded: No plan changes are required for this home in The Park.

Manhattan Expanded 3-Car: No plan changes are required for this home in The Park.

Monroe: No plan changes are required for this home in The Park.

Montego III: One step is removed from the top flight of stairs, a split landing is added.

Ramsay: The bonus room option is not offered with this plan in The Park.

Spencer II: The stairs have 1 step added, and 25” is added to the depth of the dining room/garage/bedroom#3/media room/media room closet. The commode/tub area of the hall bath on the second floor is revised, and the bonus room option is reduced by 16.77sf. The entire house is increased by 112.63sf for a total of 3066.18 (1701.67 on first floor and 1364.51 on second floor).

Talbot: The hall at the top of the stairs and between bedroom doors is reduced by 6”. The bearing wall under top of stairs moves towards the rear, taking 6” out of the breakfast area. The stairs are pulled towards front of house 6”, and the cased opening between dining room and entry shifts 3”.

Torrington: One step is added to the stairs, and a 42” high half wall capped with poplar is added at the top of the stairs. The stairs will clip the family room ceiling.

Wakefield: The stairs are 1 step longer, and shift 6” towards garage. The slope of the stairs is visible between the dining room and family room, and space is added between the newel post and the outside wall at the bottom of the stairs.

Waverly: The stairs are 1 step longer and the second floor hall bath is revised. The nook is eliminated the door to the HVAC area moves to bedroom #3.

Westmont II: The bonus room option is not offered with this plan in The Park.

Westmont II Expanded: The chase at the end of the tub is deleted and the wall between the second floor hall bath and hall moves 6”. The stairs shift 5” toward the hall bath. The space between the newel post at the bottom of the stairs is reduced by 10”.