

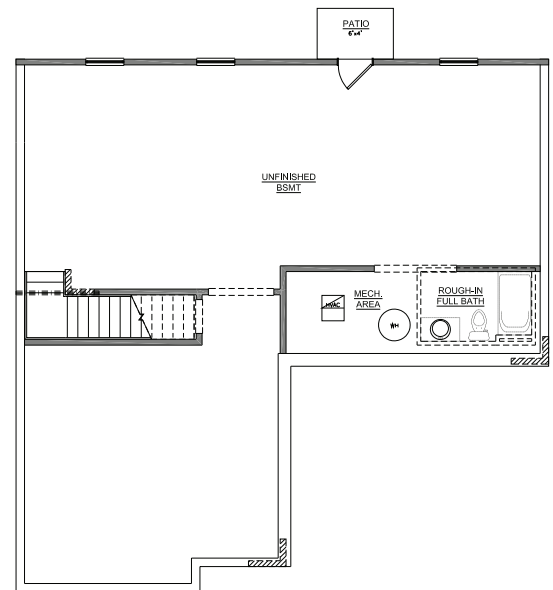
## DESIGNED FOR EXPANSION

- Finished basements add functional space and flexibility to a home.
- Forward-thinking basement design makes future finish work more economical and aesthetically pleasing.
- Poured wall heights allow for approximately 8'8" of future finished ceiling height, or for Trend Collection floor plans, approximately 7'8".
- Open web floor truss systems by Triforce allow space for current and future plumbing, electrical and HVAC work within the trusses, making finish work simpler, easier and more cost effective.
- Triforce web trusses avoid unsightly soffits or dropped ceilings and make clean, open ceilings.



## PLANNED FOR SUCCESS

- Although not every intention can be predicted, our design team spends time reviewing each floor plan to anticipate how a finished basement might be used and working to facilitate likely layouts.
- Windows and doors are placed with possible future finish work in mind. For build to suit homes, windows and doors may be customized as the lot and plan may allow.
- Where possible, bearing walls are placed with potential expansion in mind, promoting open, unobstructed finished spaces.
- Suggested optional bath rough in locations are designed for all floor plans.



*This example basement plan is laid out with a suggested optional bath rough in location near the mechanical area, and bearing walls are placed in alignment with likely room divisions, leaving large open areas. Windows and doors are grouped strategically so that spaces can be divided easily or left open.*

Contact your sales associate for more information. Because we are constantly working to improve our homes, floor plans and features are subject to change without notice.